



**REGIONAL SPECIALISED METEOROLOGICAL CENTRE-TROPICAL CYCLONES, NEW DELHI
TROPICAL WEATHER OUTLOOK**

DEMS-RSMC TROPICAL CYCLONES NEW DELHI DATED 19.12.2024

TROPICAL WEATHER OUTLOOK FOR THE NORTH INDIAN OCEAN (THE BAY OF BENGAL AND THE ARABIAN SEA) VALID FOR THE NEXT 168 HOURS ISSUED AT 0600 UTC OF 19.12.2024 BASED ON 0300 UTC OF 19.12.2024.

BAY OF BENGAL:

Yesterday's well marked low pressure area over southwest Bay of Bengal lay over southwest adjoining westcentral Bay of Bengal at 0300 UTC of today, the 19th December 2024. The associated upper cyclonic circulation extends up to 5.8 km above mean sea level. The system is likely to move nearly northwestwards towards north Tamil Nadu and south Andhra Pradesh coast during next 12 hours. Thereafter, it is likely to move nearly northwards along Andhra Pradesh coast in subsequent 24 hours. Associated Scattered to broken low and medium clouds with embedded intense to very intense convection lay over south & central Bay of Bengal between lat 8.0N to 16.0N and long 80.0E to 90.0E. Minimum Cloud Top Temperature is minus 75 to 85 deg C.

Scattered to broken low and medium clouds with embedded intense to very intense convection lay over south Bay of Bengal, south Andaman Sea. Minimum Cloud Top Temperature is minus 70 to 85 deg C. Scattered low and medium clouds with embedded moderate to intense convection lay over north Bay of Bengal.

***PROBABILITY OF CYCLOGENESIS (FORMATION OF DEPRESSION) DURING NEXT 168 HRS:**

24 HOURS	24-48 HOURS	48-72 HOURS	72-96 HOURS	96-120 HOURS	120-144 HOURS	144-168 HOURS
NIL	NIL	NIL	NIL	NIL	NIL	NIL

***NOTE: EVERY 24HR FORECAST IS VALID UPTO 0300 UTC (0830 IST) OF NEXT DAY**

ARABIAN SEA:

Scattered to broken low and medium clouds with embedded intense to very intense convection lay over south Arabian Sea, Maldives area & adjoining Equatorial Indian Ocean. Minimum Cloud Top Temperature is minus 70 to 85 deg C. Isolated low and medium clouds with embedded moderate to intense convection lay over eastcentral Arabian Sea & Comorin area and isolated weak to moderate convection lay over northwest adjoining westcentral Arabian Sea.

***PROBABILITY OF CYCLOGENESIS (FORMATION OF DEPRESSION) DURING NEXT 168 HRS:**

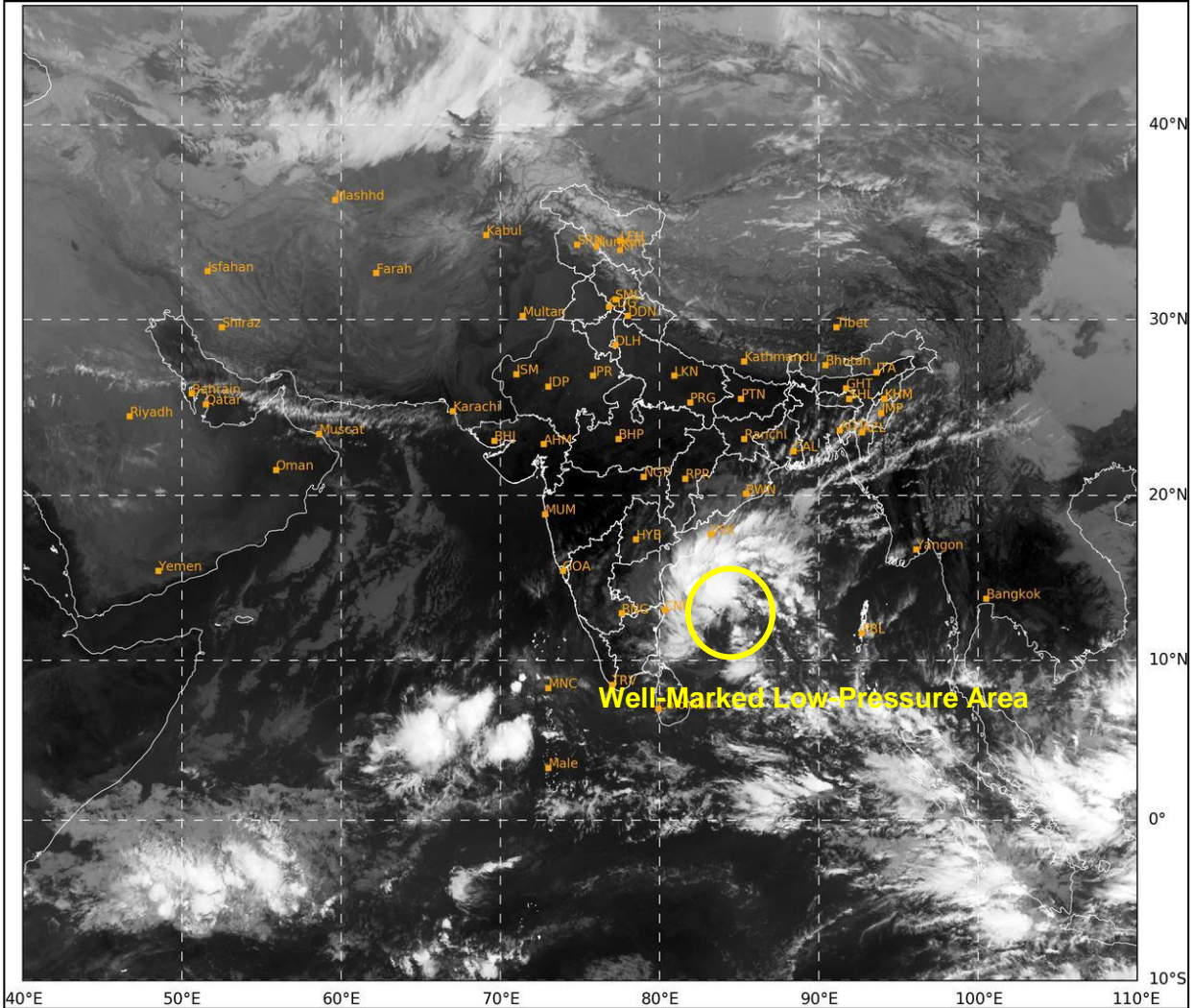
24 HOURS	24-48 HOURS	48-72 HOURS	72-96 HOURS	96-120 HOURS	120-144 HOURS	144-168 HOURS
NIL	NIL	NIL	NIL	NIL	NIL	NIL

***NOTE: EVERY 24HR FORECAST IS VALID UPTO 0300 UTC (0830 IST) OF NEXT DAY**

REMARKS: NIL

SAT : INSAT-3DR IMG
IMG_TIR1 10.8 um
L1C Mercator

19-12-2024/(0515 to 0542) GMT
19-12-2024/(1045 to 1112) IST



412 937
IMD, DELHI

Cloud distribution: (a) Isolated: <25%, Scattered:25-50%, Broken: 51-75%, Solid:>75%, Convection Intensity: (a) Weak: Cloud Top Temperature (CTT) >-25°C, (b) Moderate: CTT: - 25°C to -40°C, (c) Intense: CTT: - 41°C to -70°C and (d) Very Intense: : Less than -70°C
PROBABILITY OF CYCLOGENESIS (FORMATION OF DEPRESSION):NIL: 0%, LOW: 1-33%, , MODERATE: 34-66% AND HIGH: 67-100%
This is a guidance Bulletin for WMO/ESCAP Panel Member countries. Visit respective National websites for Country specific Bulletins